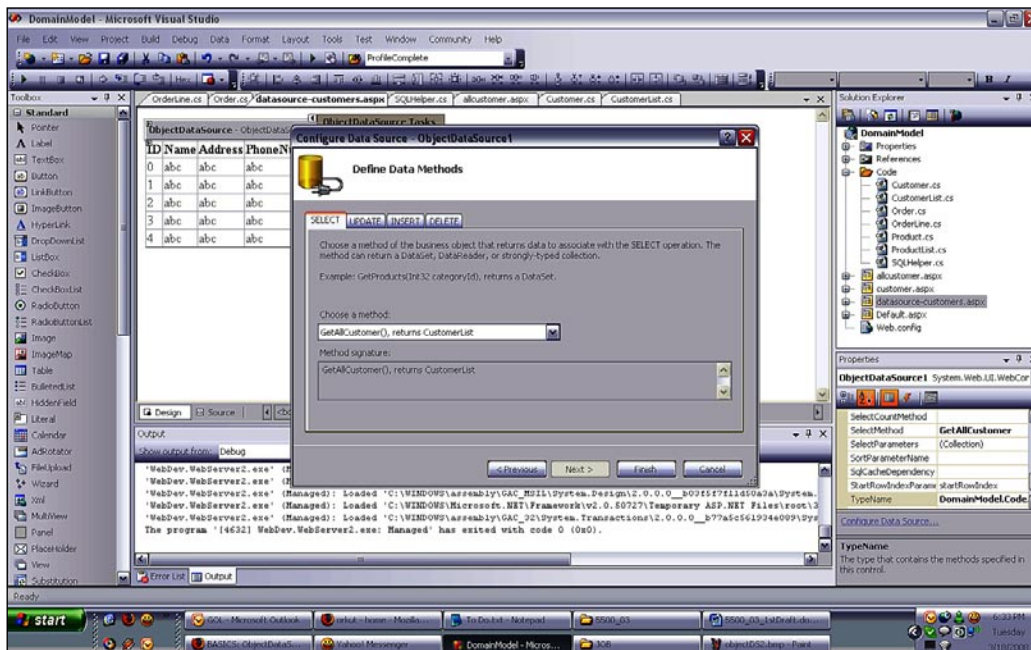
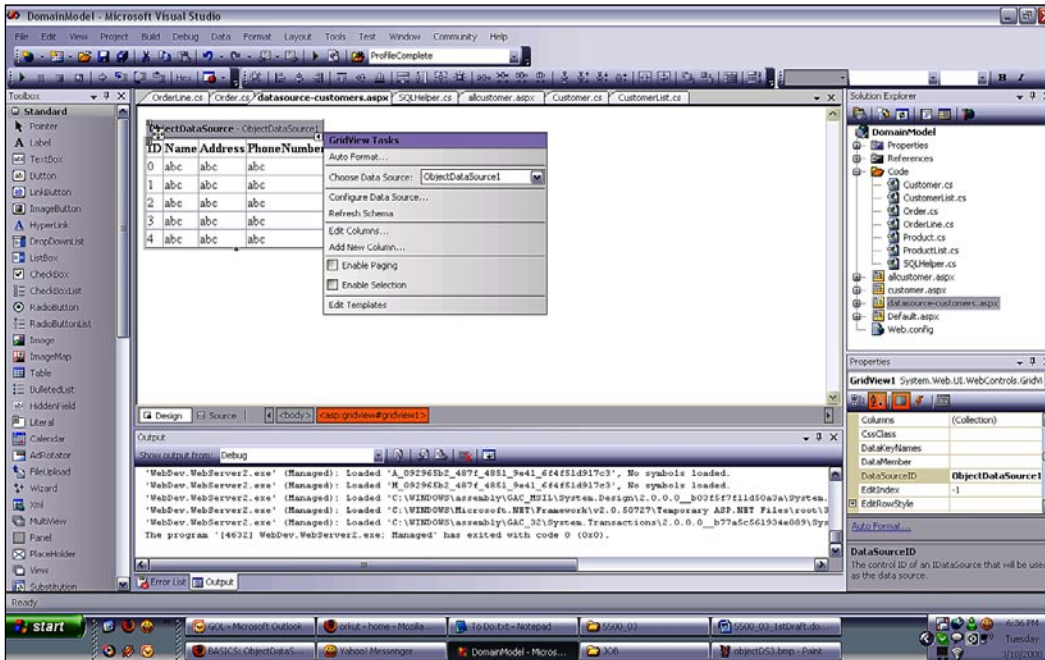


5. Then, we need to set the **SELECT**, **UPDATE**, and **INSERT** methods. For our sample, we will just set the **SELECT** method:



- Then, we select **Finish**. We then add a **GridView** control on the same page and set the data source to our object data source control:



- Now we run the page, and voila! We see all of the records without using any code in the UI layer!

Chapter 3: Domain Model 3... x

http://localhost:58415/datasource-customers.aspx

ID	Name	Address	PhoneNumber	Email	Password	UserName
3	Prashant sir	Delgi	4564675			
4	Momnu sir	Hariyana	4564675			
5	Raj sir	Bihar	4564675			
6	Arun sir	meerut	4564675			
8	Bharat	hastal	57688			
9	kp	jagritivihar	578			
13	bharat	hkjj	6878			
14	Rajkumar	jkhkj	567			
15	gdffgf	gdffgh	5435			
16	hkjhk	ghkk	78687			
17	hjkui	hjkklklj	5345345			
18	q	qqq	7897			
19	kahu	hjkhkj	789789			